



GIG  
CYMRU  
NHS  
WALES

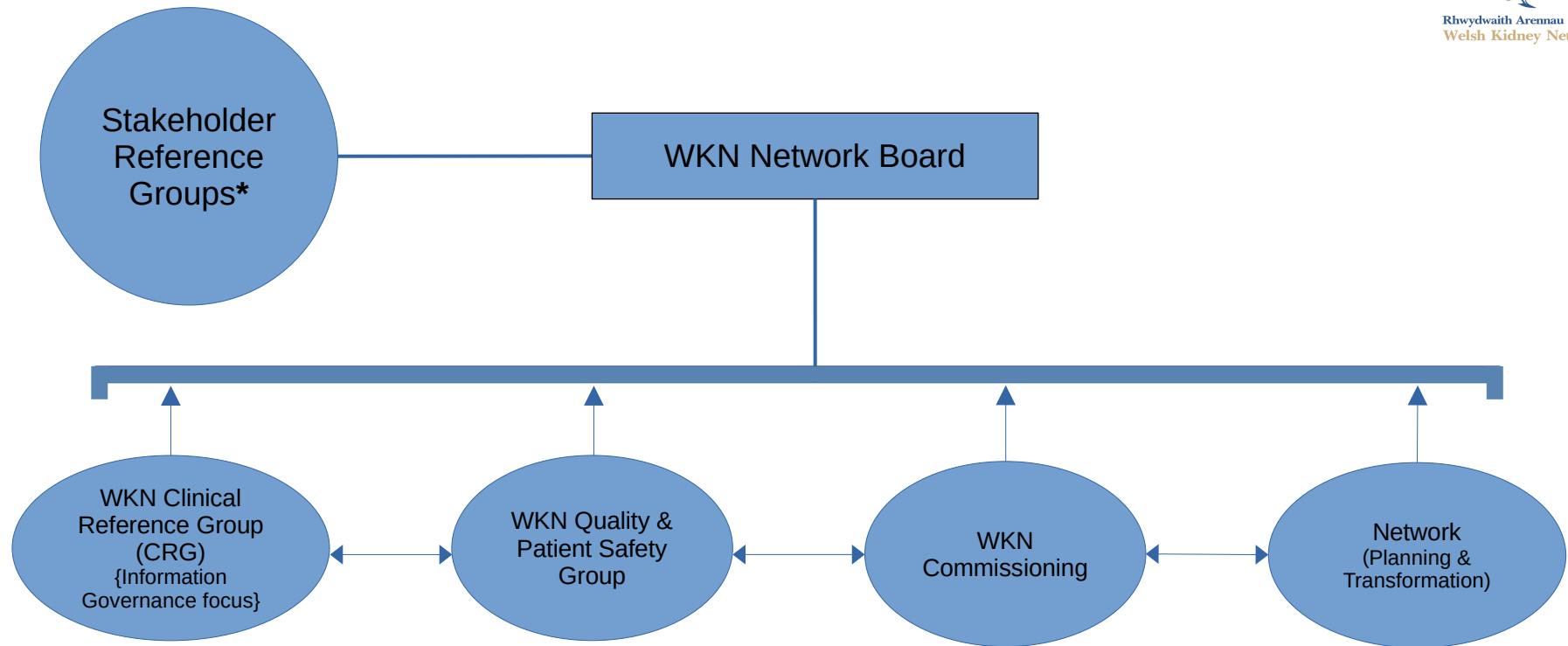
Cyd-bwyllgor  
Comisiynu  
Joint Commissioning  
Committee

# WKN Governance Framework

Rhwydwaith Arennau Cymru  
Welsh Kidney Network



# Welsh Kidney Network (WKN) Strategy & Delivery Governance via Network Board

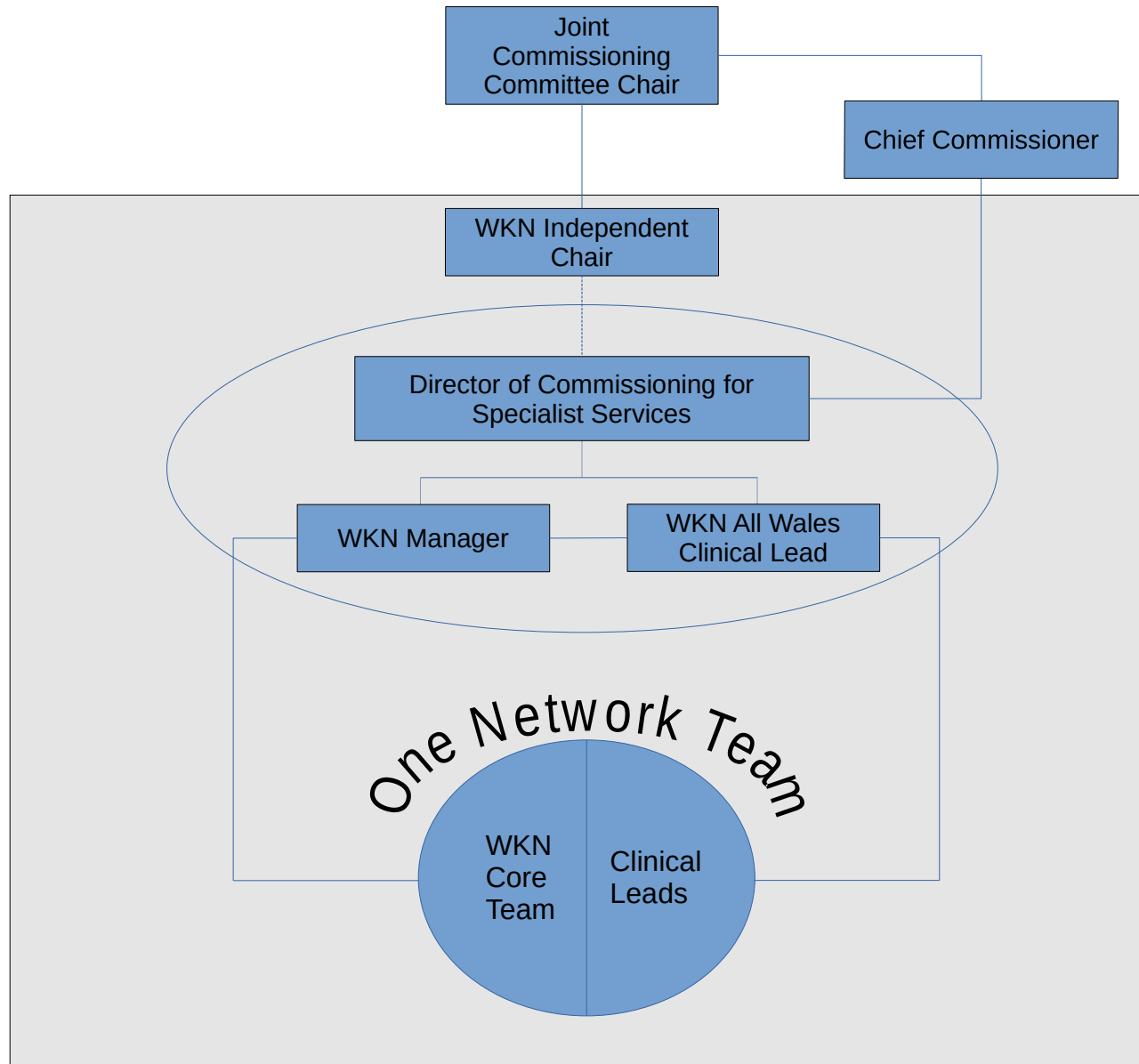


### The purpose of the Board:

- Setting the direction (strategy)
- Assurance on delivery, quality and performance
- Setting the tone and culture

*\*Currently Health and Wellbeing Professional Group + Patient Engagement Group + Senior Nurses Group + Collaborative Group*

# Welsh Kidney Network (WKN) Leadership Team

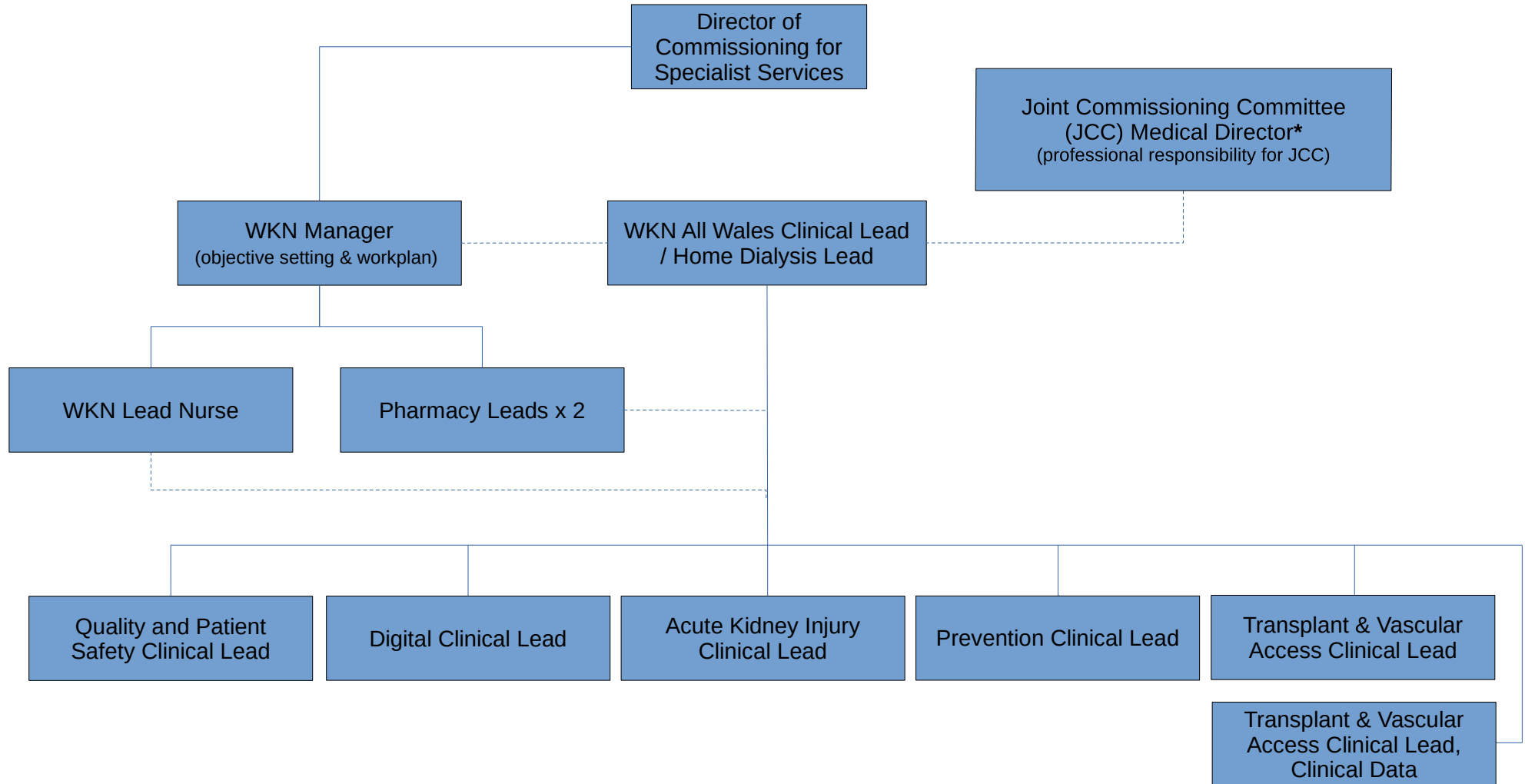


# Welsh Kidney Network (WKN) Clinical Leadership



Rhwydwaith Arennau Cymru  
Welsh Kidney Network

- 3 year term
- Annual objectives



*\*Professional responsibility for JCC.*



Rhwydwaith Arennau Cymru  
Welsh Kidney Network

# Welsh Kidney Network (WKN) Commissioning Team

Network Board  
Chair

Director of  
Commissioning for  
Specialist Services  
(Accountable)

WKN Manager  
(Responsible)

WKN Lead Nurse  
(Quality & Patient Safety)

WKN All Wales Clinical Lead  
(Clinical advice & oversight)

WKN Pharmacy Lead  
(Clinical Advice)

Procurement Business  
Partner  
(Dedicated to WKN)

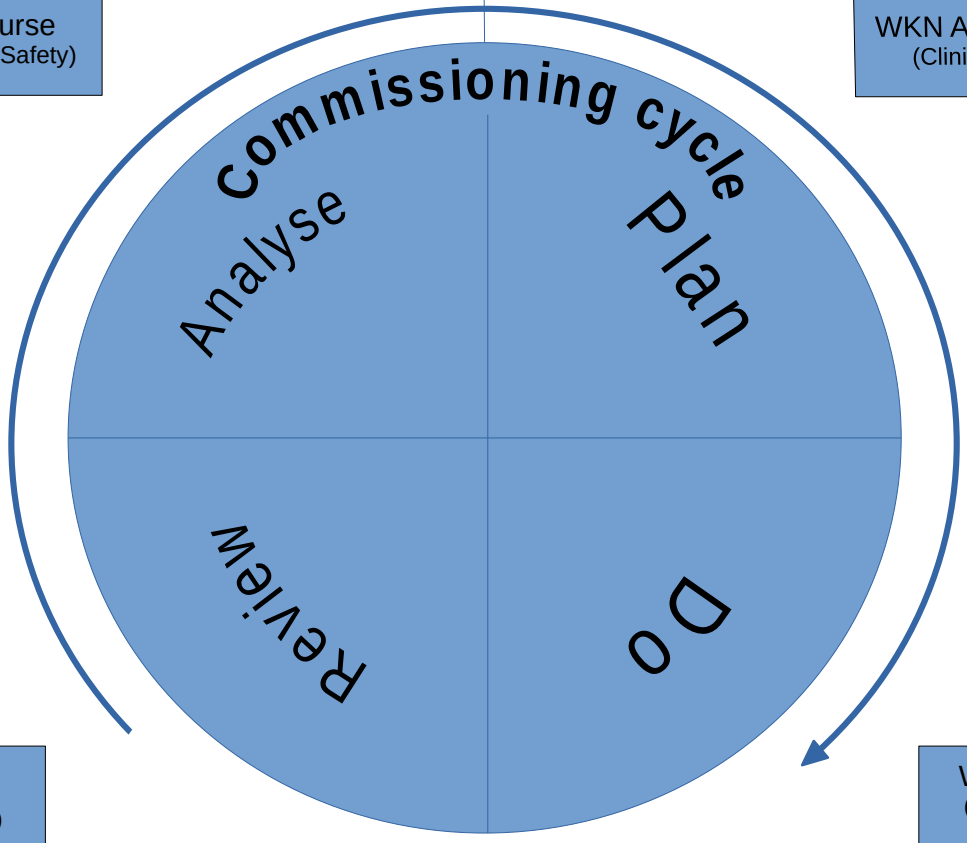
WKN Quality and Patient  
Safety Clinical Lead  
(Clinical Assurance)

WKN Deputy  
Manager  
(Performance & Delivery)

WKN Coordinator  
(Co-ordination/Admin)

WKN Data Analyst  
(data driven decision-  
making)

Finance Manager  
(Value for Money & Value in Health  
Financial Planning)



Drive clinically led outcome based commissioning

Meet bi-monthly

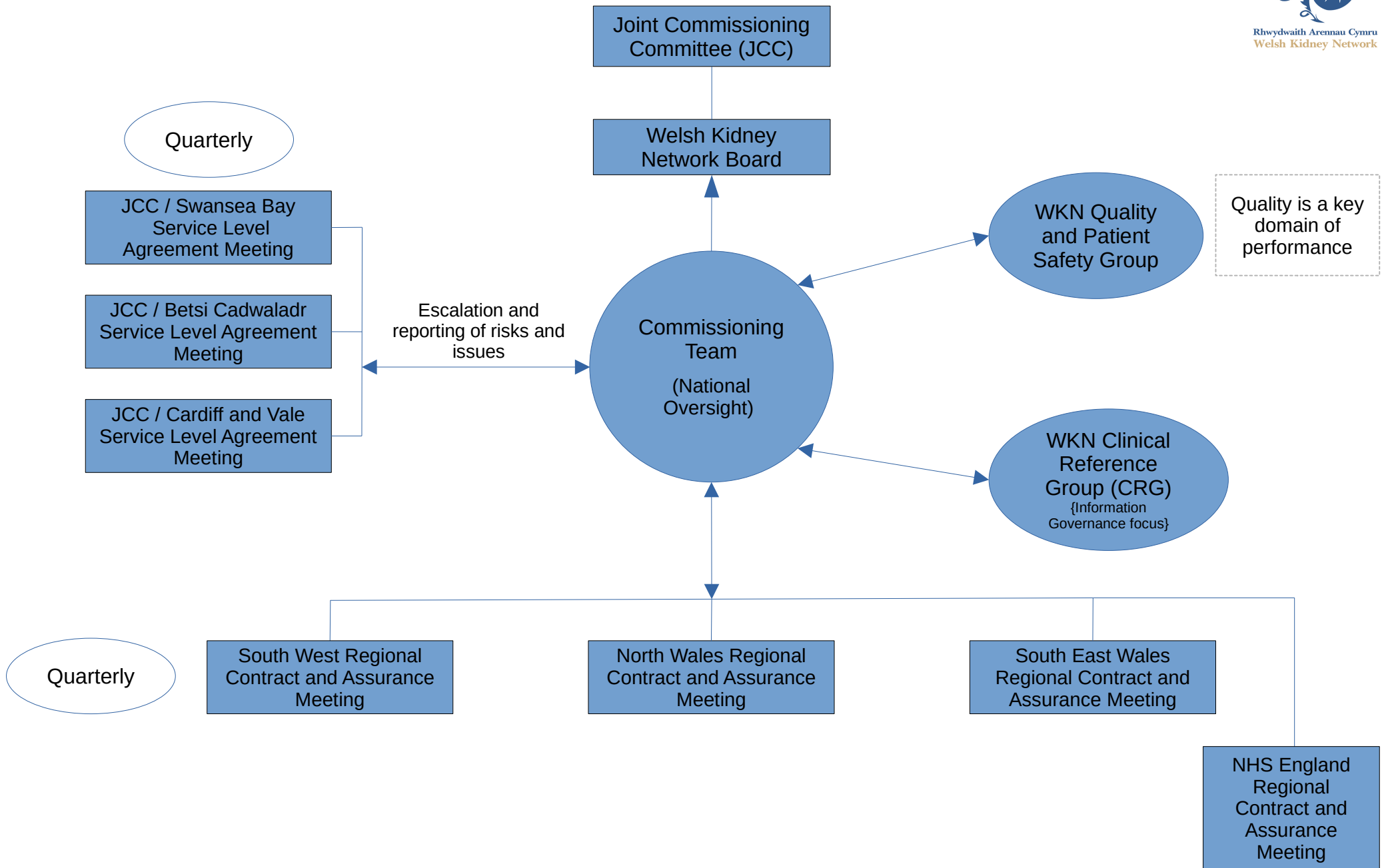
National oversight

Planning, performance delivery through commissioning

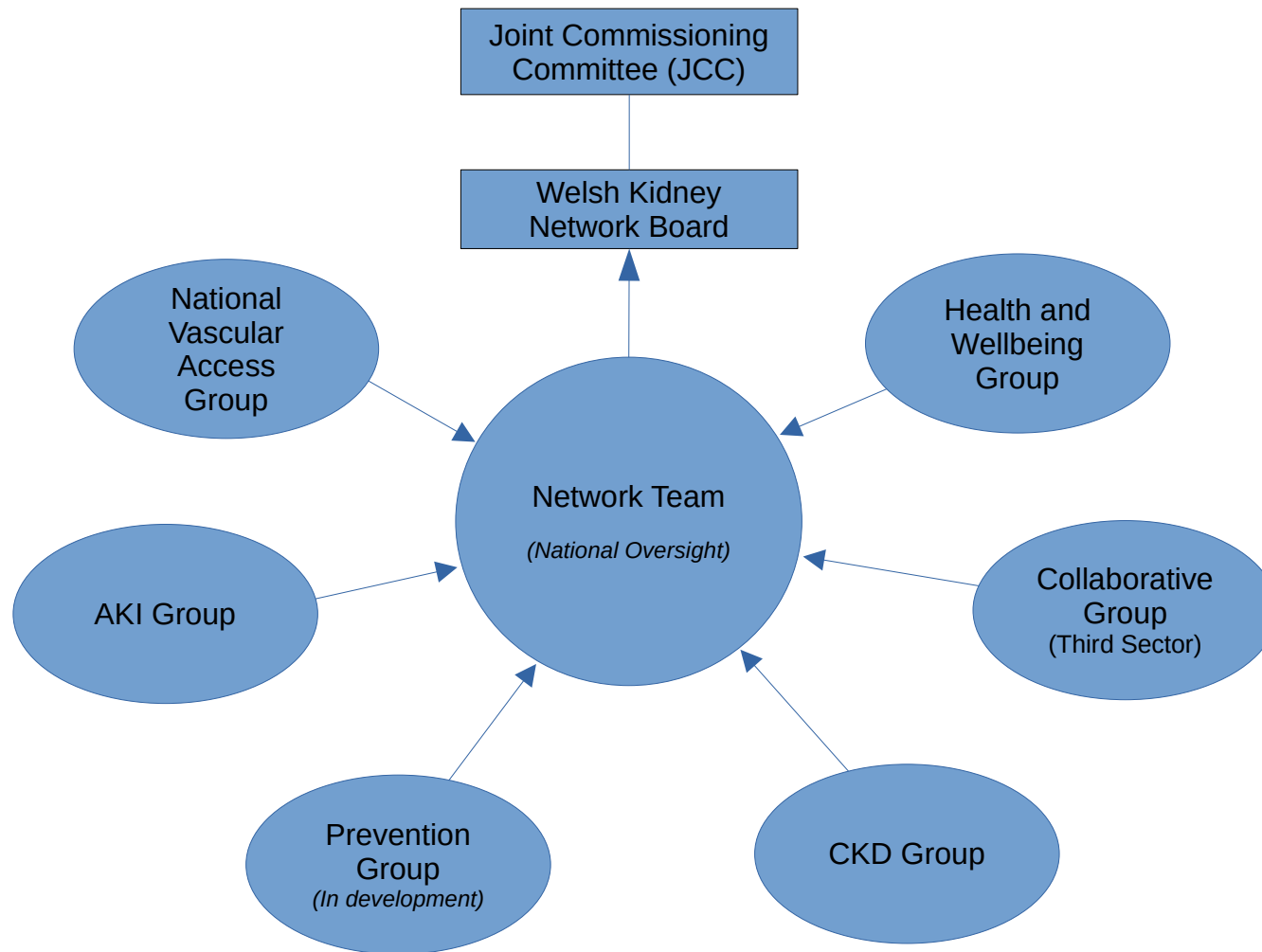
# Commissioning & Performance Management



Rhwydwaith Arennau Cymru  
Welsh Kidney Network



# Planning & Transformation

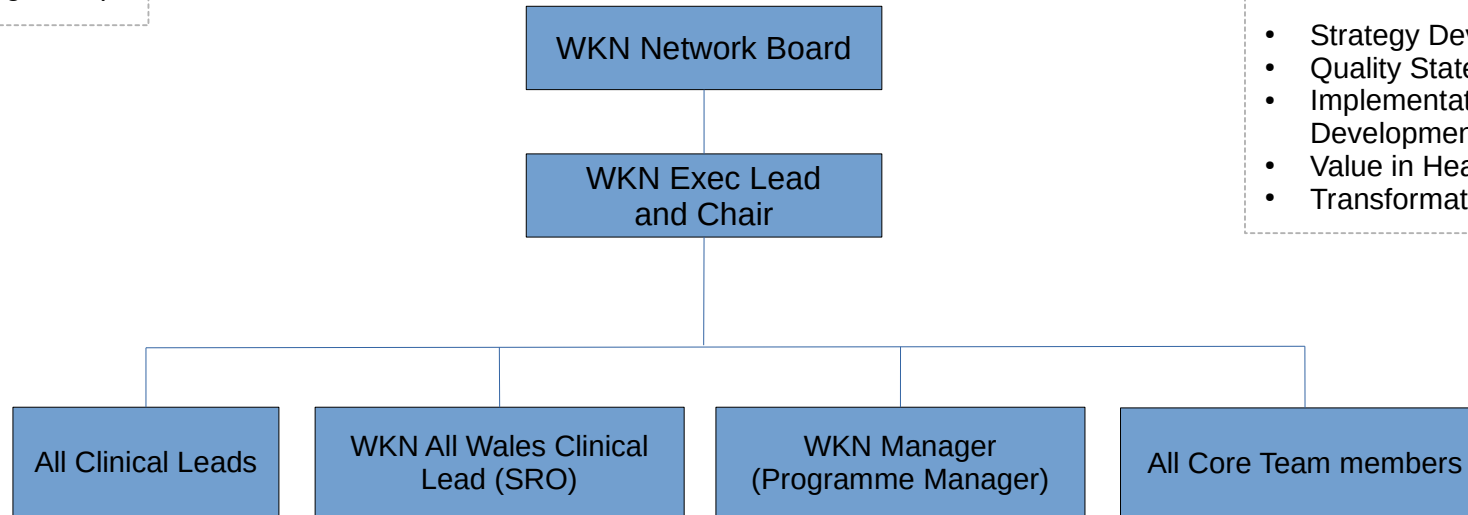


# Welsh Kidney Network (WKN) Team



Rhwydwaith Arennau Cymru  
Welsh Kidney Network

Meet bi-monthly (alternate to Commissioning Team)



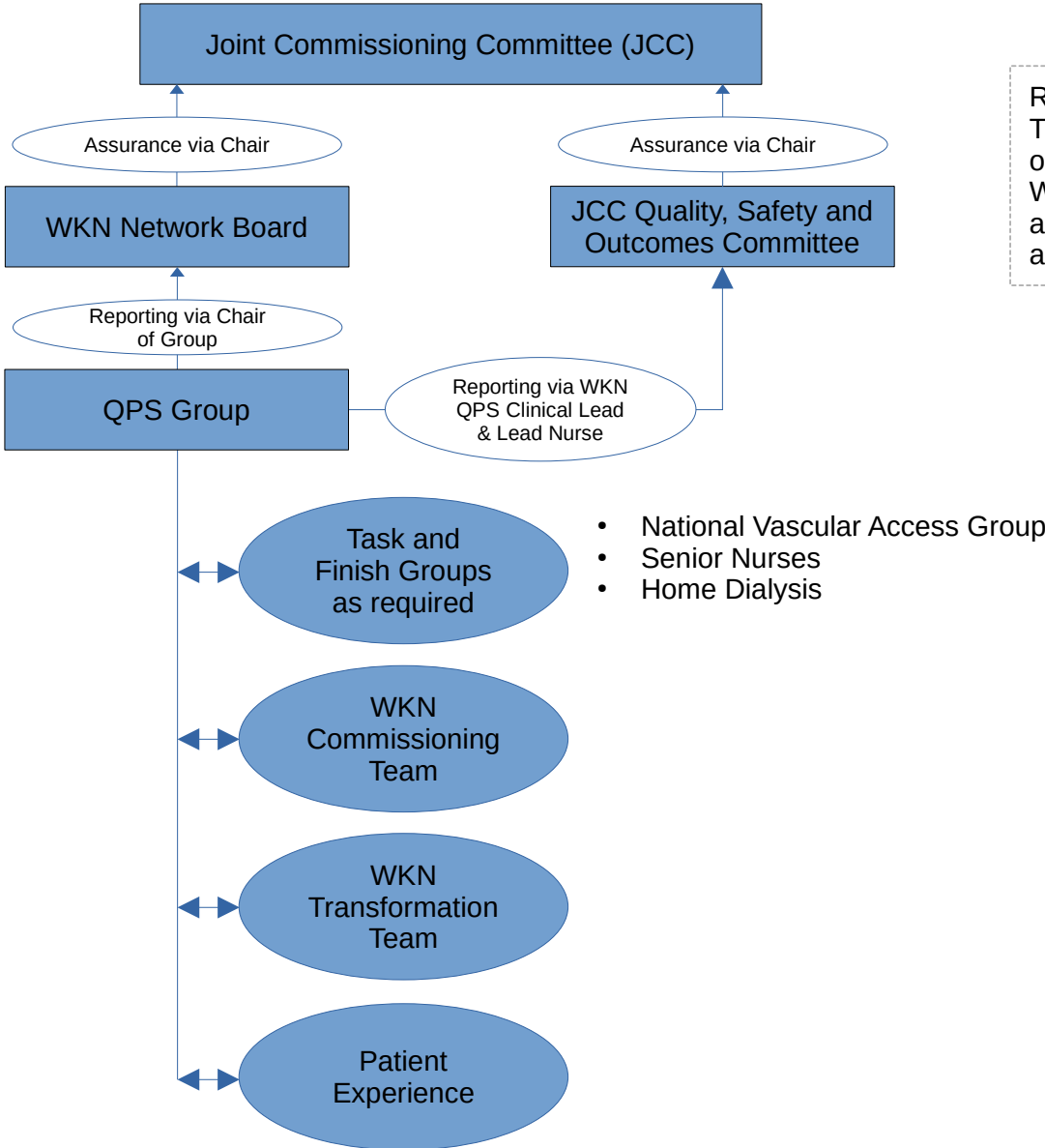
## Purpose

- Strategy Development and Delivery
- Quality Statement Development and Delivery
- Implementation Plan Development and Delivery
- Value in Health delivery
- Transformation

- All Wales Clinical Lead & Home Dialysis Lead
- Quality Patient Safety Clinical Lead
- Digital Clinical Lead
- Transplant & Vascular Access Clinical Leads
- Acute Kidney Injury Clinical Lead
- Pharmacy Leads
- Prevention Lead

- Deputy Network Manager
- Lead Nurse
- Finance Manager
- Data & Performance Analyst
- Project & Service Improvement Manager
- Network Coordinator

# Welsh Kidney Network (WKN) Quality and Patient Safety (QPS) Governance Structure



Remit:  
The Network improves quality outcomes for renal patients in Wales, provides QPS assurance and improves patient experience and engagement.



## Products

- |   |                         |
|---|-------------------------|
| 1. Strategy on a page (10 years)  | 2024                    |
| 2. Work Plan & Quality Statement Implementation Plan  | 2025                    |
| 3. Digital Strategic Plan   | 2025                    |
| 4. Strategic Financial Plan (5 years)   | 2025                    |
| a) A WKN Performance Management Framework (JCC)   | 2025/26                 |
| b) Development of WKN Commissioning Plan for inclusion<br>in JCC IMTP inc 1-3 year Financial Plan (from no. 4 above). | 2025/26<br>&<br>2026/27 |
| <i>A &amp; B linked to wider JCC work.</i>  |                         |
| 5. Demand and Capacity Report   | 2025/26                 |