

5.2.2 APPENDIX 2

RESPONSE TO INDEPENDENT REVIEW ON GOVERNANCE & REPORTING ARRANGEMENTS FOR THE WELSH KIDNEY NETWORK WITHIN THE NWJCC

Introduction

Following consideration of the final independent review report, including engagement with the current Independent Chair of the Welsh Kidney Network (WKN), the following outlines the plan of action the NWJCC's Senior Leadership Team will take in response to the recommendations in the report to clarify reporting arrangements to reflect the new NWJCC's governance framework.

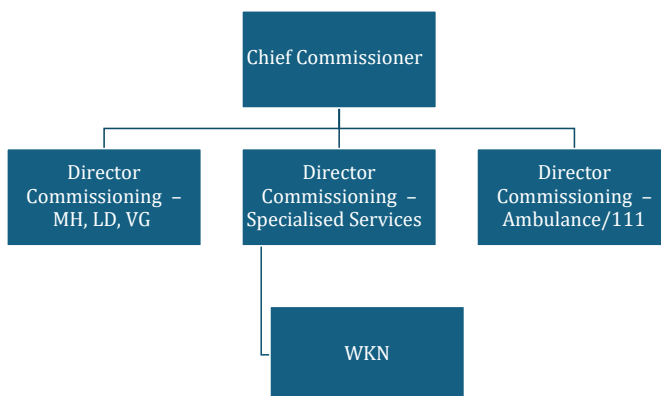
The final report presented 3 options to strengthen governance arrangements and option 2 is supported to, ***'Revise the reporting arrangements of the WKN to more fully integrate their workings with JCC's new organisational governance arrangements'***.

The following details the management response to the recommendation and summarises the arrangements that will be put in place to strengthen integration.

1. Reporting Structure

WKN to align with direct reporting through the NWJCC Specialised Services Commissioning Directorate in the following structure:

NWJCC Reporting Structure



This model will support decision-making within the existing NWJCC's Scheme of Delegation from the Chief Commissioner, through the Director of Commissioning for Specialised Services to officers in the WKN.

Assurance will be provided through the existing governance mechanisms in the NWJCC, notably through the SLT, Sub-Committees and Joint Committee as an integral part of the Specialised Services Directorate.

5.2.2 APPENDIX 2

The WKN will also contribute to the collaborative planning taken forward through the Specialised Services Collaborative Commissioning Group, chaired by the Director of Commissioning for Specialised Services, feeding in to the CCLG (advisory forum, chaired by the Chief Commissioner).

2. WKN Meetings

The WKN Board meetings and Terms of Reference will be reviewed, noting the following proposed key changes;

- WKN meetings to be Chaired by Director of Commissioning for Specialised Services
- Consider identifying a Vice Chair (potential AMD)

3. Clinical/Professional Reporting

Reporting arrangements for all clinical staff within the network will reflect accountability in the NWJCC clinical leadership model, noting:

- Clinical lead will remain 0.2 WTE paid sessions
- Clinical lead to be recognised as an Associate Medical Director (AMD), reporting to the Deputy Medical Director (to be appointed).
- Pharmacy lead will remain engaged on paid sessions and report to Clinical Lead (AMD WKN)
- Nurse Lead will report professionally to the NWJCC Director of Nursing

4. Lay Member involvement

It is proposed the Chair of the NWJCC considers identifying a NWJCC Independent Lay Member of the Joint Committee to act as an affiliate link to each Directorate, noting potential further benefit of the link with Specialised Services Directorate sitting at WKN meetings.